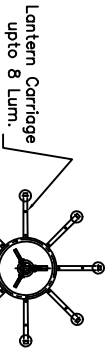
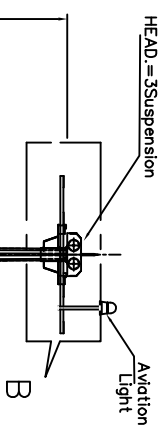


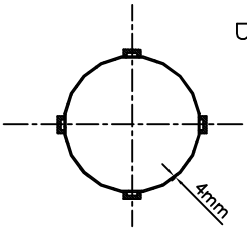
DO NOT SCALE PRINT DRG,IF IN DOUBT PLEASE ASK



TOP VIEW



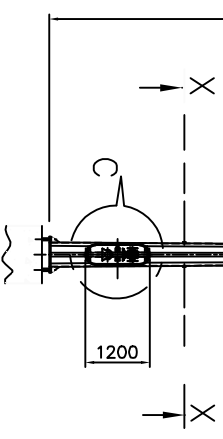
SECTION X-X



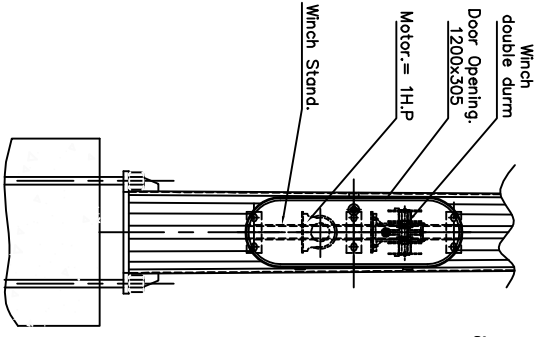
20 mtr

(Indu. 2 section)  
TOP Ø150  
Bottom Ø460  
Thickness .4, 3mm

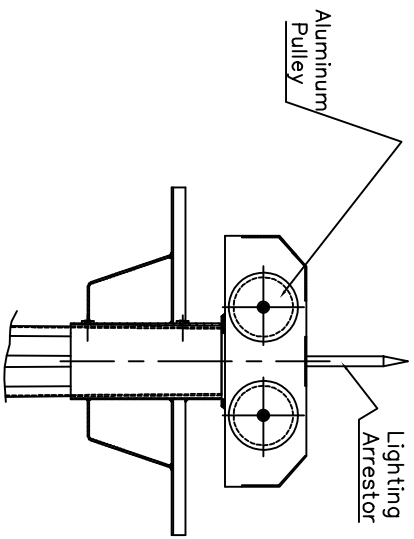
FRONT VIEW



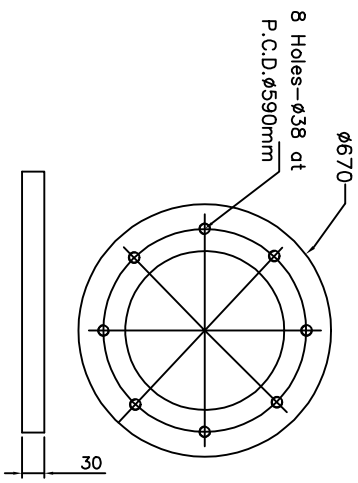
ENLARGED VIEW OF 'C'



ENLARGED VIEW OF 'B'



BASE PLATE



|    |  |                                    |   |  |
|----|--|------------------------------------|---|--|
| 01 | FOUND. BOLT                                      | BOLT QTY.                          | 8 |  |
|    |  | BOLT Ø. 30mm<br>BOLT LENGTH. 850mm |   |  |
| 02 | OD. P.C.D. ANCHOR PLATE HOLE DIA.                | 01                                 |   |  |
|    | HOLE QTY. 8<br>HOLE DIA. Ø38mm<br>PLATE THK. 3mm |                                    |   |  |

TOLERANCE: -

- 1) A/F Top & Bottom ±4%
- 2) Length ±1.2%
- 3) Pole Straightness ±0.3%
- 4) Thickness ±2%

NOTES: -

- 1) All dimensions are in mm
- 2) Length of section a) 10350 b) 10350
- 3) Metal Protection Hot Dip Galvanized Average 70 Micron as per IS 2629.
- 4) Metal of Shaft - Hot Rolled MS Plate Equivalent to IS:2062, Gr. E-250A..
- 5) Metal Base Plate & Foundation Bolt- As per IS 2062, Gr. E-250A.
- 6) Make of the mast shall be VSTP.



VIPIN S. T. POLES PVT. LTD.

WORKS : Village Kutubpur, Hissar  
E-mail : geethisar@gmail.com  
Website : www.vspthgimastl.com

|             |              |               |                                   |            |        |
|-------------|--------------|---------------|-----------------------------------|------------|--------|
| DRAWN BY    | Sanjay Kumar | Title         | Drawing of 20 Mtr. High Mast Pole | PROJECTION |        |
| CHECKED BY  | Dharamveer   | Client Name:- |                                   | SCALE      | nts 1  |
| APPROVED BY |              |               |                                   | SHEET NO.  | 1 OF 1 |
|             |              |               |                                   | D.No.      | Date   |